

Public Services Committee Meeting June 20, 2013

The **Public Service Committee** met Thursday, June 20, 2013, at 6:30 pm in the City Hall conference room. Present were Committee Chairperson Sue Galbraith and Committee Members Dwayne Andrews and John Hollowell. Committee Member Jerry Partridge was excused. Also present was Public Utilities Director Al Kelm and Committee Recorder/Deputy City Clerk Connie Watts.

Chairperson Galbraith called the meeting to order.

1. Discussion About Adding Frisbee Golf to Riverside Park

Brandon Janshen and John Goff of Milestown Community Improvement, Inc., presented a proposal to the Committee to establish a nine-hole Frisbee golf (fol) course in Riverside Park. They have spoken to the schools, who were receptive to the idea of possibly incorporating fol into their P.E. curriculum. Fol is just like golf, they explained, except a Frisbee is thrown into a chain basket instead of a golf hole. A diagram of the proposed course was distributed.

Riverside Park was chosen because of the interesting terrain, it is maintained, is close to schools, and would generate interest in the downtown area. The course is designed so that the Frisbees are thrown away from the playground area.

Director Kelm and Committee Member Andrews felt the fol course was a wonderful idea. However, they both felt Riverside Park was too busy to be used for this project. Director Kelm suggested the group consider Milwaukee Park. It is rarely used and is plenty big enough. He also said there are water facilities there if the group wanted drinking fountains, restrooms and/or sprinkling. If there was renewed interest and use in the park, he was confident the City would maintain it again. He mentioned it is a Brownfield area and, therefore, eligible for grant monies.

Mr. Janshen and Mr. Goff warmed to the Milwaukee Park suggestion and said they would take the idea back to their group for discussion. They will contact Chairperson Galbraith when they are ready to schedule another meeting.

2. Fence Encroachment on City Right of Way at 805 S. Custer

Brandon Kelm, 805 S. Custer, approached the Committee to request an encroachment of 10 feet on Comstock to erect a chain link fence. He explained they have two large dogs and two young children. He distributed pictures showing the sides of the house and the proposed fence.

There was discussion about whether installing a six-foot sidewalk would place the property in the flood plain. Flood Plain Administrator Samantha Malenovsky, who was in the audience, reassured him that installing the sidewalk would not necessitate flood insurance for his property.

*** Committee Member Hollowell moved to recommend approving the encroachment on City right-of-way on 805 S. Custer, with the stipulations that the fence would have to be removed if the City were to have need of it and that a six-foot sidewalk would be installed sometime in the future. The motion was seconded by Committee Member Andrews and, on roll call vote, passed unanimously, 3-0.*

Request of Citizens


There were no requests of citizens.

ADJOURNMENT


*** Having no further business, Committee Member Hollowell moved to adjourn the meeting, seconded by Committee Member Andrews and passed unanimously, 3-0.*

The meeting was adjourned at 7:25 p.m.

Respectfully Submitted:



Susanna Galbraith, Chairperson



Connie L. Watts, Recorder

PUBLIC SERVICES COMMITTEE MEETING AGENDA

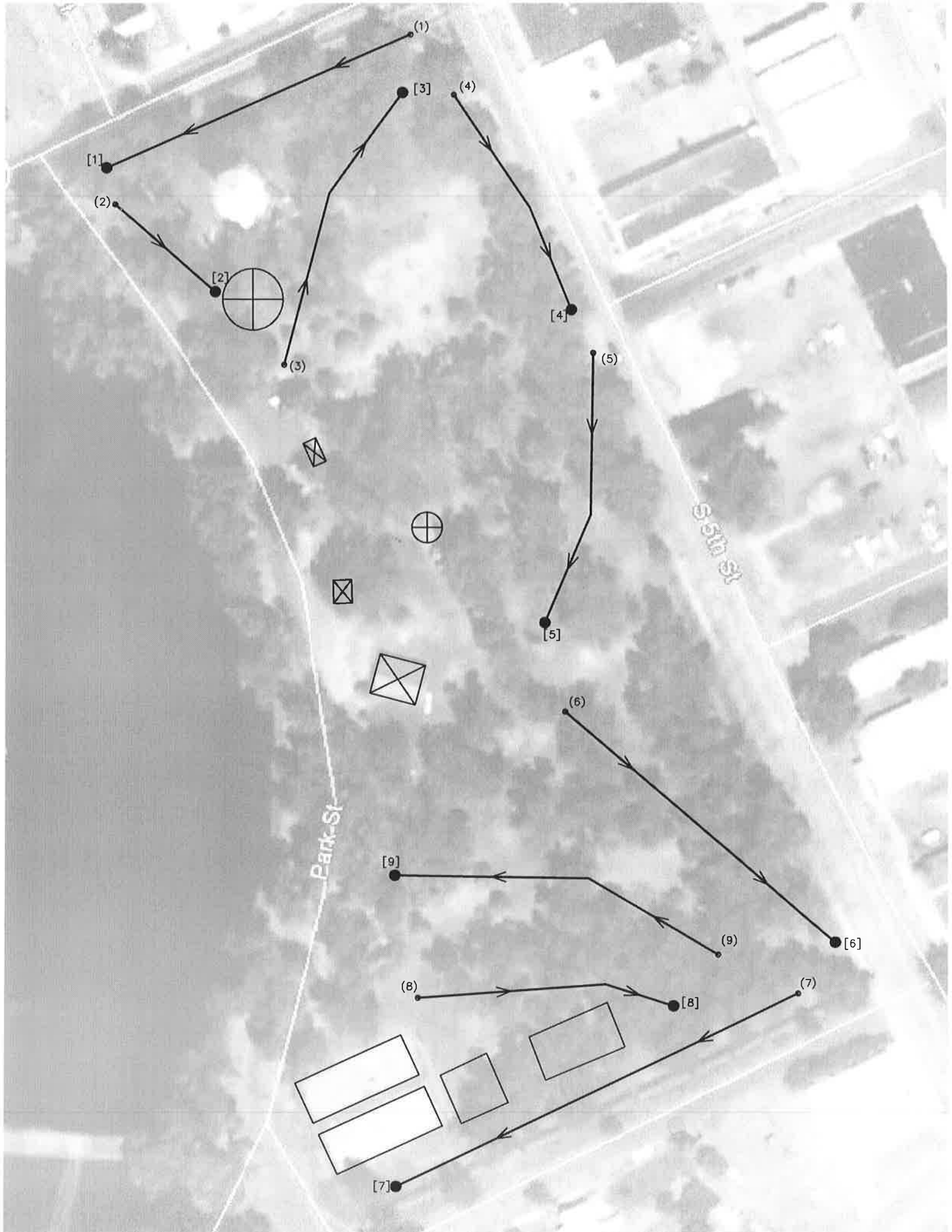
DATE: June 20, 2013 - Thursday

TIME: 6:30 p.m.

PLACE: City Hall Conference Room

1. Discussion about adding Frisbee golf to Riverside Park
2. Encroachment on City Right-of-Way for Fence at 805 S. Custer
3. Request of Citizens

Public comment on any public matter that is not on the agenda of this meeting can be presented under "Request of Citizens" provided it is within the jurisdiction of the City to address. Public comment will be entered into the minutes of this meeting. The City Council cannot take any action on a matter unless notice of the matter has been made on an agenda and an opportunity for public comment has been allowed on the matter. Public matter does not include contested cases and other adjudicative proceedings.



(1)

[1]

(2)

[2]

(3)

[3]

(4)

[4]

(5)

[5]

(6)

[6]

[9]

(9)

(8)

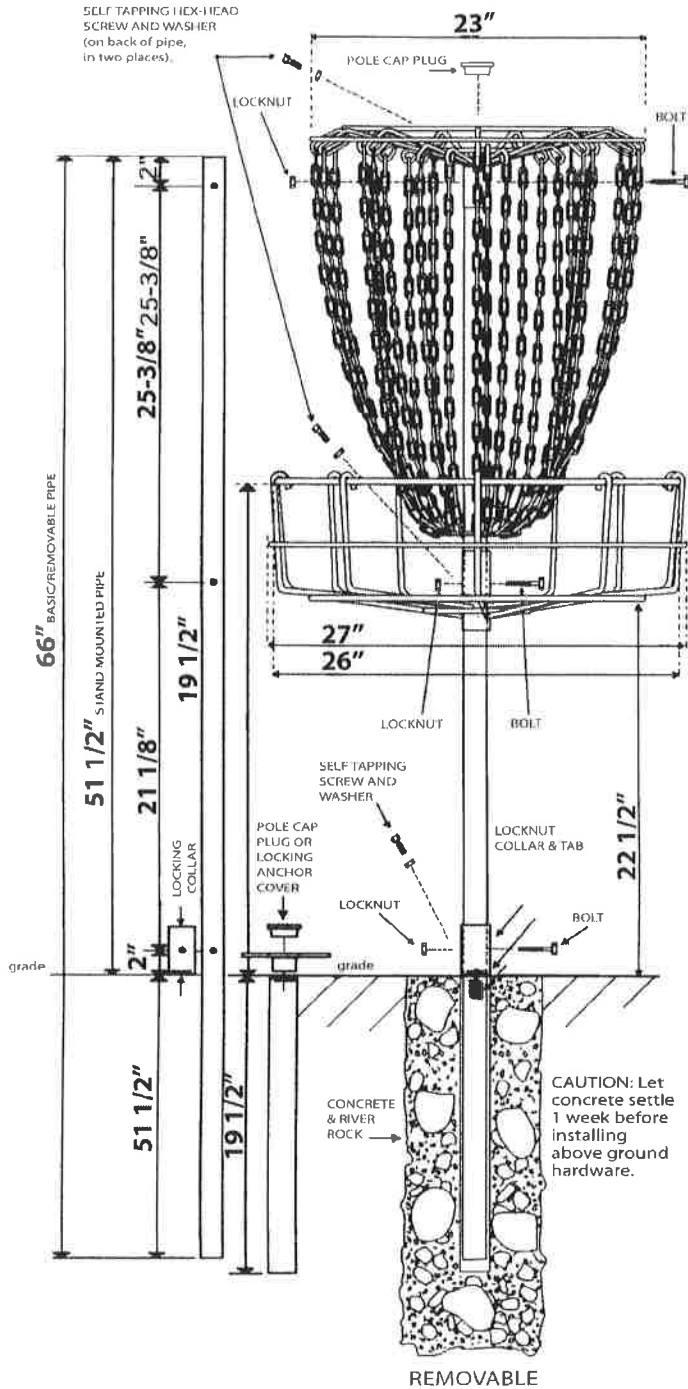
[8]

(7)

[7]

DISCRAFT ChainStar™

TARGET ASSEMBLY INSTRUCTIONS



POLE - (66") - 1 1/2 in. I.D., 1 15/16 in. O.D. hot-dipped galvanized pipe, drilled. The holes closest to one end of the pole are for the chain assembly. This end should also have a red pole cap plug. The middle set of holes are for the basket assembly. The bottom set of holes are for the locking collar for removable Chainstars™. When installing without a sleeve, the middle hole of the three top holes should face towards the tee.

CHAIN ASSEMBLY - Welded and hot-dipped galvanized. 12 outer sliding links and chains, 6 midway. All 24 chains assembled with heavy duty "S" hooks to allow freer movement of chains. 6 inch sleeve - bolt, hex head nut and washer (will not vibrate loose like one-way screws).

CHAIN ASSEMBLY INSTRUCTIONS - 3/8 inch steel rod, welded and hot-dipped galvanized. 6" sleeve - bolt, hex head nut and nylon insert locknut, hex head tec screw, internal tooth star lock washer (will not vibrate loose like one-way screws).

TRAPPER™ BASKET ASSEMBLY INSTRUCTIONS Slide Basket Assembly down pole (basket facing up), until holes in collar align with holes in middle of pole. Fasten with bolt, hex head nut and nylon insert locknut, hex head tec screw, internal tooth star lock washer (will not vibrate loose like one-way screws).

REMOVABLE CHAINSTAR™ LOCKING COLLAR - Welded and hot-dipped galvanized. 4" locknut, hex head tec screw, internal tooth star lock washer (will not vibrate loose like one-way screws).

LOCKING COLLAR ASSEMBLY - Slide the locking collar, with the locking tab at the bottom of collar, up pole to bottom set of holes. Align holes in locking collar with hole in pole and head tec screw, internal tooth star lock washer. After the locking collar is fastened, the pole can be placed in sleeve to complete installation.

Note: The LOCKING TAB should always be pointing at the tee.

GROUND SLEEVE - 19 1/2"x 2 1/8" O.D. pipe, drilled. Install flush to ground with matching locking tab aiming at the tee.

CONCRETE AND RIVER ROCK - (Used to stabilize anchor until cement sets) - Approximately 1 cubic foot (concrete, river rock and lock not furnished).

CAUTION: Let concrete settle 1 week before installing above ground hardware.

U.S. PATENTS 4461484, 4792143, and other patents pending © DGA 1992
Illustrations and Designed by: va:headrick@yahoo.com

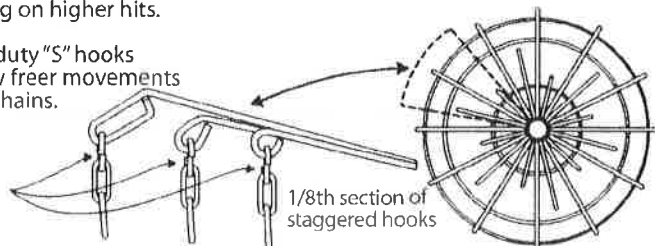
Trapper™ is a registered trademark of the Disc Golf Assoc.

This chart is a product of Discraft Inc. and is subject to change. © 10/18/06

THE DISCRAFT CHAINSTAR™

24 Chains hung in staggered formations to optimize disc catching plus outside slider chains to increase catching on higher hits.

Heavy duty "S" hooks to allow freer movements of the chains.



MCI2 FOLF COURSE

12-11-2012

ITEM	QTY	UNIT	PRICE	TOTAL
Removable Chainstar Targets*	9	ea.	327.00	2943
Shipping & Handling (Targets)	1	l.s.	356.00	356
Customized Discs	150	ea.	5.00	750
Customized Disc Setup Fee	1	ea.	60.00	60
Shipping & Handling (Discs)	1	l.s.	60.00	60
Quikrete	10	ea.	5.00	50
Sand	1	c.y.	30.00	30
Gravel	1	c.y.	35.00	35
Landscape around bases ???	9	ea.	50.00	450
"Tee Box" Allowance	9	ea.	100.00	900
				\$ 5,634.00

* 9-Hole (w/ number plates)

Items needed:

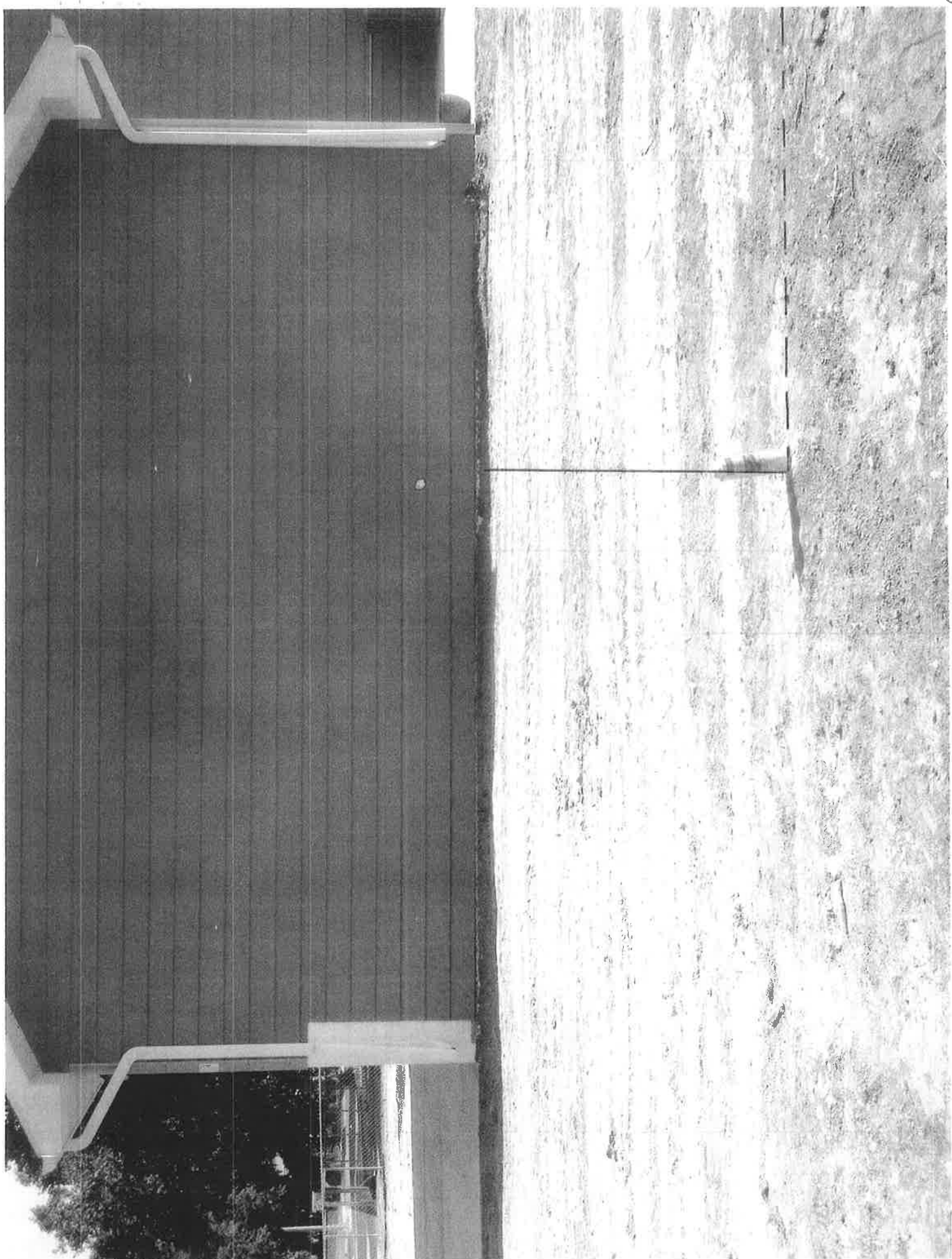
Post-hole auger (8")

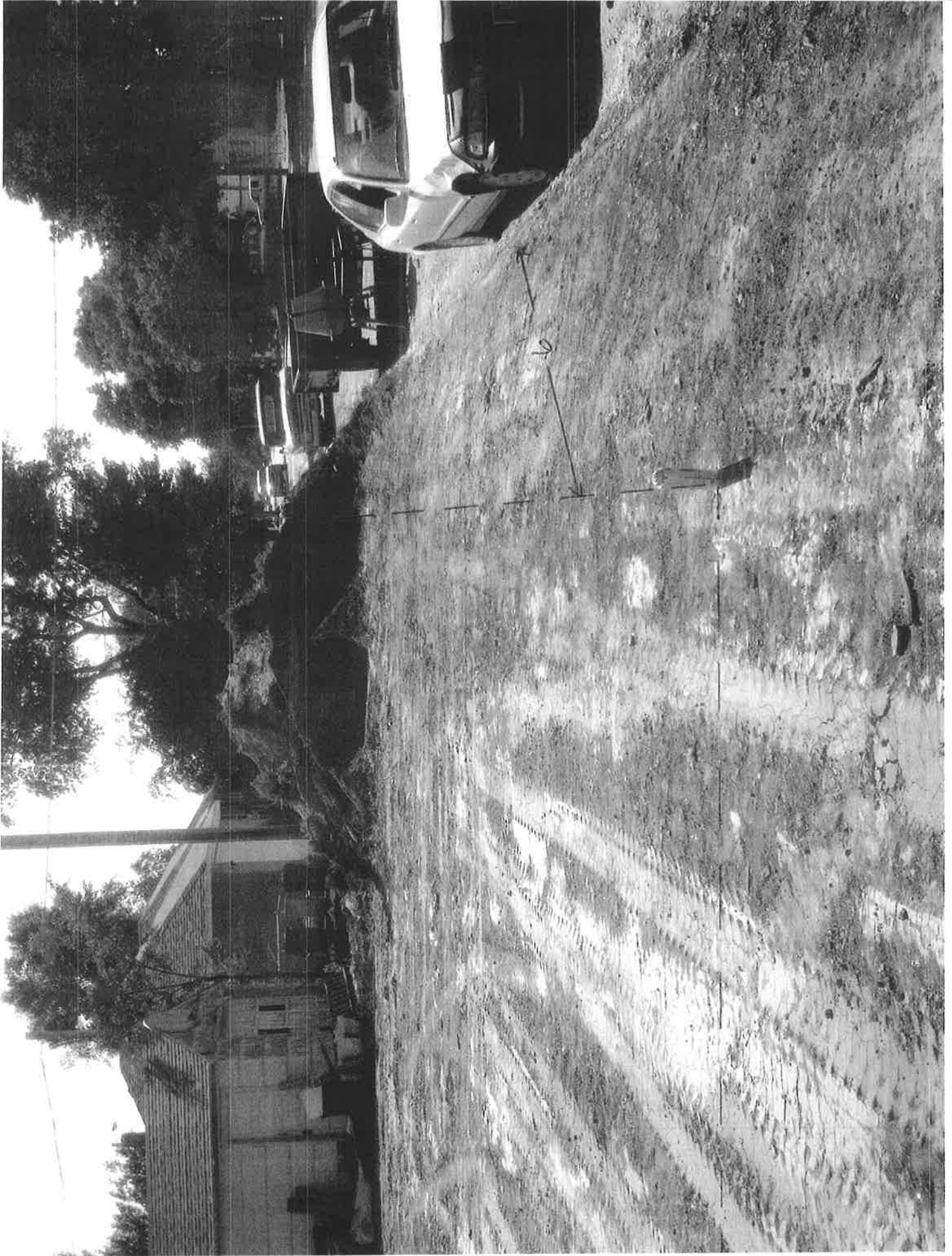
Concrete mixer

Access to water

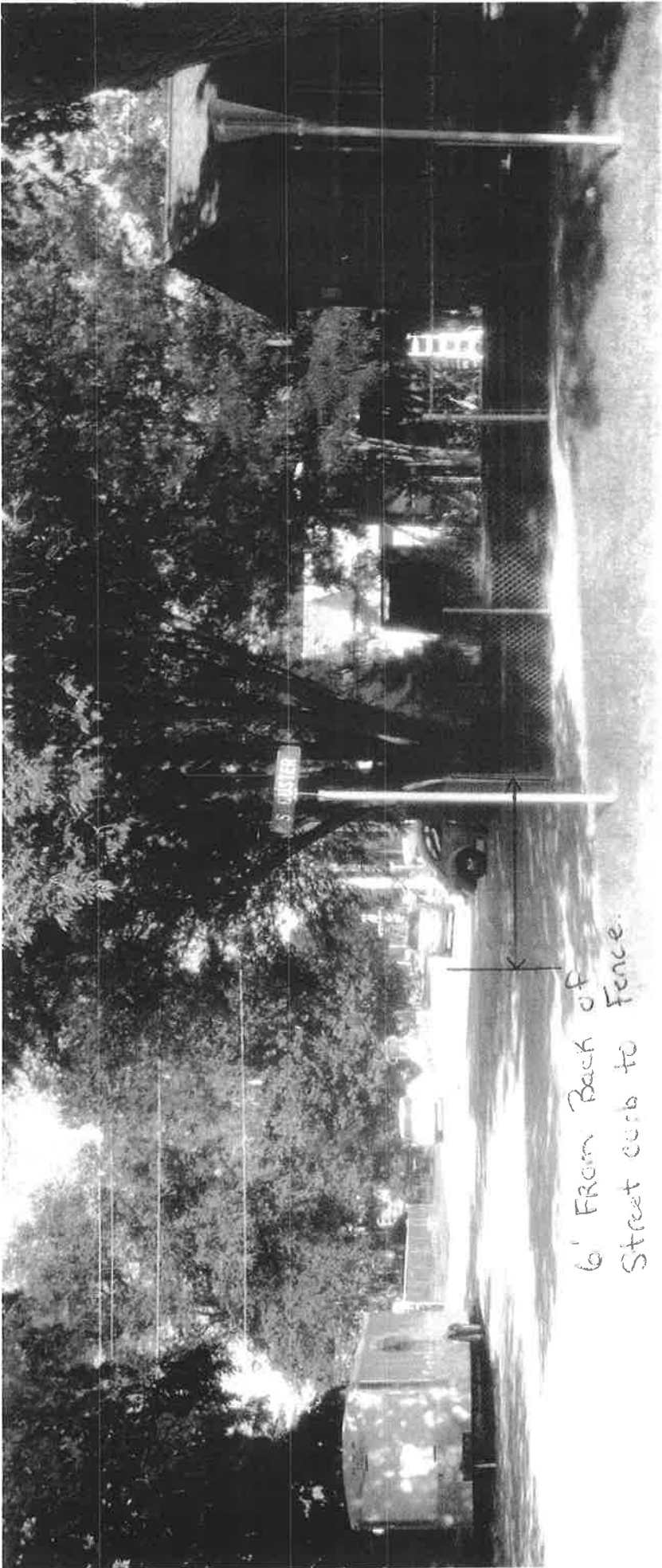
Gravel







looking W on Comstock



6' From Back of
Street curb to
Fence.

